

Data Sheet | Item Number: 2773-2401/995-020

PUSH WIRE® Inline Splicing Connector; for solid and stranded conductors; max. 4 mm²; 2-conductor; transparent housing; Transparent cover; Surrounding air temperature: max 85°C (T85); 4,00 mm²; transparent

<https://www.wago.com/2773-2401/995-020>



Color: transparent

Notes

Safety management note

NOTICE: Observe installation and safety instructions!

- **Only to be used by electricians!**
- Do not work under voltage/load!
- Use only for proper use!
- Observe national regulations/standards/guidelines!
- Observe technical specifications for the products!
- Observe the number of permissible potentials!
- Do not use damaged/dirty components!
- Observe conductor types, cross-sections and strip lengths!
- Insert conductor until it hits the product's backstop!
- Use original accessories!

To be sold only with installation instructions!

Electrical data

Ratings per IEC/EN

| | |
|----------------------------|--|
| Ratings per | EN 60664 |
| Nominal voltage (II/2) | 450 V |
| Rated surge voltage (II/2) | 4 kV |
| Rated current | 32 A |
| Legend (ratings) | (II / 2) Δ Overvoltage category II / Pollution degree 2 |

Ratings per UL

| | |
|--------------------------------|---------|
| Approvals per | UL 486C |
| Rated voltage UL (Use Group C) | 600 V |
| Rated current UL (Use Group C) | 20 A |

Connection data

| | |
|----------------------------|---|
| Clamping units | 2 |
| Total number of potentials | 1 |

Connection 1

| | |
|---|--|
| Connection technology | PUSH WIRE® |
| Actuation type | Push-in |
| Solid conductor | 0.75 ... 4 mm ² / 18 ... 12 AWG |
| Stranded conductor | 1.5 ... 4 mm ² |
| Fine-stranded conductor; with insulated ferrule | 0.75 ... 1.5 mm ² / 18 ... 16 AWG |
| Fine-stranded conductor; with uninsulated ferrule | 1 ... 1.5 mm ² / 16 AWG |
| Conductor diameter | 1.6 ... 2 mm / 18 ... 12 AWG |

Connection 1

| | |
|------------------|-------------------------------------|
| Strip length | 10 ... 11 mm / 0.39 ... 0.43 inches |
| Wiring direction | Side-entry wiring |

Physical data

| | |
|--------|------------------------|
| Width | 6.15 mm / 0.242 inches |
| Height | 6.8 mm / 0.268 inches |
| Depth | 29.5 mm / 1.161 inches |

Material data

| | |
|------------------------------------|--|
| Note (material data) | Information on material specifications can be found here |
| Color | transparent |
| Cover color | transparent |
| Material group | Illa |
| Insulation material (main housing) | Polycarbonate (PC) |
| Flammability class per UL94 | V2 |
| Clamping spring material | Chrome-nickel spring steel (CrNi) |
| Contact material | Electrolytic copper (E _{Cu}) |
| Contact Plating | Tin |
| Fire load | 0.038 MJ |
| Weight of insulation material | 0.8 g |
| Weight | 1.5 g |

Environmental requirements

| | |
|----------------------------------|----------------|
| Ambient temperature (operation) | +85 °C |
| Processing temperature | -35 ... +60 °C |
| Continuous operating temperature | 105 °C |

Commercial data

| | |
|-----------------------|---------------|
| ETIM 9.0 | EC000446 |
| ETIM 8.0 | EC000446 |
| PU (SPU) | 360 (20) pcs |
| Packaging type | Blister foil |
| Country of origin | DE |
| GTIN | 4066966349115 |
| Customs tariff number | 85369010000 |

Environmental Product Compliance

| | |
|------------------------|-------------------------|
| RoHS Compliance Status | Compliant, No Exemption |
|------------------------|-------------------------|

Downloads

Environmental Product Compliance

Compliance Search

Environmental Product
Compliance
2773-2401/995-020



1 Compatible Products

1.1 Optional Accessories

1.1.1 General accessories

1.1.1.1 Installation terminal block



Item No.: 207-5485/316-000

cable repair set; for multicore cables;
Straight-through; with glue; Cable diame-
ter 8 - 24 mm; with enclosed splicing
connectors; medium-walled; black

Installation Notes

Conductor termination



Strip conductor to 10 mm.



Insert the conductor.



Check for the correct conductor position.

Conductor removal

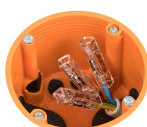


Twist the connector alternately left and
right while pulling it off the conductor.

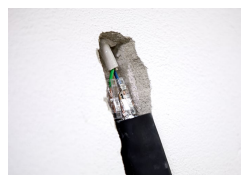
Application



Wiring conductors in a flush-mounted
junction box.



Extending short wires.



Use with a shrink tube



Use of the inline splicing connector (for
plugging in with a shrink tube) in the cable
repair set 207-5485/316-000.

Application

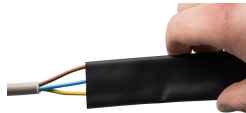


Damaged cable

Strip the damaged cable approx. 10 cm uniformly around the damaged area.

Cut out the damaged areas in the copper and disconnect all other conductors. For damaged areas between 1 mm and 30 mm, at least 30 mm of the damaged conductor must be removed. Tip: A connector (approx. 30 mm long) can be used as a length guide.

Strip conductor and conductor bridge to 10 mm specified and insert into connector. Only one connector is required for damage points < 1 mm or conductors with a flat cut. Two connectors with wire jumpers must be used for damage points > 1 mm.



Strip 10 mm conductor per specification and insert connector (example shows staggered connectors).

Pull the shrink tube over the cable end.

The shrink tube must have an overlap length of at least 30 mm on the cable sheath.

Heat the shrink tube evenly with a hot air blower between 110°C and 200°C.



The shrinking process is only completed when the shrink tube is tightly connected to the cable and the adhesive has visibly melted (see photo).