

Product datasheet

Specifications



Load-shedder, Schneider Charge, 1P, maximum current allowed to charging station manually set from 32A to 100A

EVA2HPC1

Main

Range	Schneider Charge
Product or component type	Load-shedder
Material	Plastic

Complementary

Range compatibility	EVlink EVlink Home
Condition of use	Indoor
Mounting support	35 mm DIN rail
Setting of maximum current provided to charging station	Manual
Possible maximum current provided to charging station	32 A 40 A 50 A 63 A 80 A 100 A
[Us] rated supply voltage	220...230 V AC 50/60 Hz +/- 10 %
Power consumption in W	4 W
connectivity to devices	PLC
Local signalling	1 green LED, function: control process 1 red LED, function: fault indication 1 green LED, function: embedded communication status
Standards	EN 61010-1:2010 EN 61326-1:2013
Quantity per set	Set of 1
Height	70 mm
width	93 mm
Depth	69 mm
Net weight	196 g
Colour	White

Environment

Operating altitude	0...2000 m
Ambient air temperature for operation	-30...50 °C
Ambient air temperature for storage	-40...85 °C
Relative humidity	5...95 %

Overvoltage category	III
----------------------	-----

Pollution degree	2
------------------	---

Packing Units

Unit Type of Package 1	PCE
------------------------	-----

Number of Units in Package 1	1
------------------------------	---

Package 1 Height	9.000 cm
------------------	----------

Package 1 Width	10.000 cm
-----------------	-----------

Package 1 Length	17.500 cm
------------------	-----------

Package 1 Weight	532.000 g
------------------	-----------

Unit Type of Package 2	S04
------------------------	-----

Number of Units in Package 2	20
------------------------------	----

Package 2 Height	30.000 cm
------------------	-----------

Package 2 Width	40.000 cm
-----------------	-----------

Package 2 Length	60.000 cm
------------------	-----------

Package 2 Weight	12.150 kg
------------------	-----------

Unit Type of Package 3	P12
------------------------	-----

Number of Units in Package 3	80
------------------------------	----

Package 3 Height	45.000 cm
------------------	-----------

Package 3 Width	80.000 cm
-----------------	-----------

Package 3 Length	120.000 cm
------------------	------------

Package 3 Weight	63.000 kg
------------------	-----------

Environmental Data

Schneider Electric aims to achieve Net Zero status by 2050 through supply chain partnerships, lower impact materials, and circularity via our ongoing “Use Better, Use Longer, Use Again” campaign to extend product lifetimes and recyclability.

[Environmental Data explained >](#)

[How we assess product sustainability >](#)

Environmental footprint

[Environmental Disclosure](#)

[Product Environmental Profile](#)

Use Better

Materials and Substances

Packaging made with recycled cardboard **No**

Packaging without single use plastic **No**

EU RoHS Directive **Compliant with Exemptions**

SCIP Number **35f25d1c-ed42-419a-bab0-354f2d8eb602**

China RoHS Regulation [China RoHS declaration](#)

Use Again

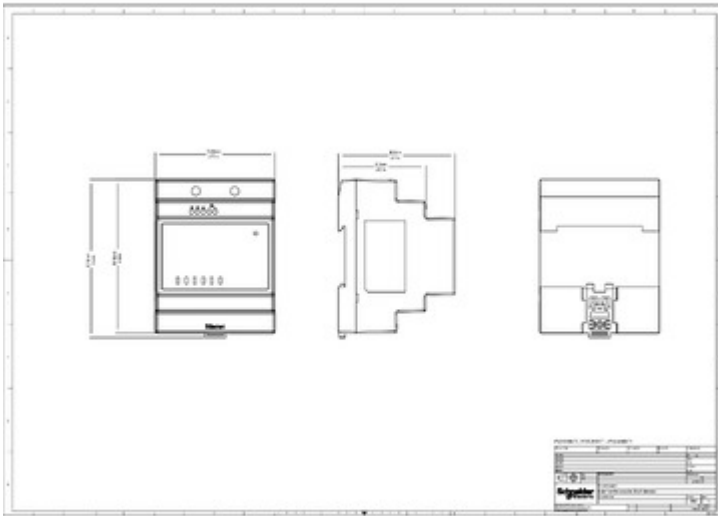
Repack and remanufacture

[Circularity Profile](#)

[End of Life Information](#)

Technical Illustration

Dimensions



Offer Marketing Illustration

Product benefits / Features

