



Smart Push-Button Remote Mechanism with ControlLink and LED

41EPBCLM-VW

Iconic

Life Is On

CLIPSAL
by Schneider Electric

1 Follow the installation instructions

2 Configure the mechanism if required

For your safety

⚠️ DANGER

HAZARD OF ELECTRIC SHOCK, EXPLOSION, OR ARC FLASH

- This product must be installed and serviced by appropriately qualified and/or licenced electrical personnel.
- Isolate the electrical supply before doing any work on this product.
- Ensure that the product has been correctly installed and tested for safe operation before reconnecting the electrical supply.
- The Locking Bar on Iconic grids must be set to the Closed position to ensure that the mechanism cannot be removed during normal operation.
- There are no user serviceable parts inside the product.

Failure to follow these instructions will result in death or serious injury.

⚠️ CAUTION

EQUIPMENT DAMAGE HAZARD

- Install the device according to instructions in this document.
- Pay attention to the specifications and wiring diagrams related to the installation.
- Do not use this product for any other purpose than specified in this instruction.
- Dropping the device may damage the mech. Check device operates after being dropped or if physical damage is shown.

Failure to follow these instructions can result in injury or equipment damage.

Prerequisites and accessories

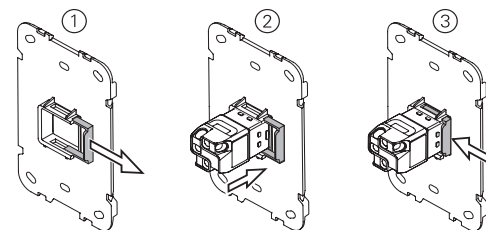
- Any Iconic push button primary mechanism with ControlLink capability.
- Iconic grid, skin and dolly for mounting.
Note: Parts packs are available separately in various colours to complement the installation decor. See clipsal.com/Iconic for more information.
- Standard wiring for ControlLink connections.

Getting to know the Smart Remote Mechanism

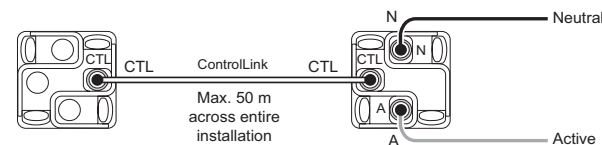
- Push button (tactile) control
- ControlLink remote multi-way dimming and switching
- Load state indicator
- Works 'out of the box' with the Wiser Iconic Push-Button Dimmer.



Fitting the mechanism to the grid



Cabling and connections



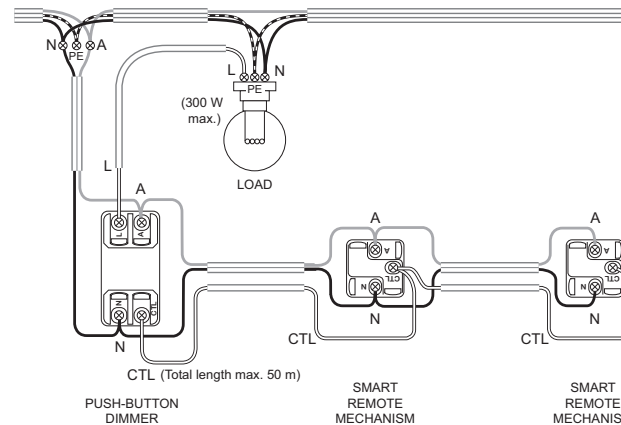
ANY PUSH-BUTTON MECHANISM WITH CONTROLINK

SMART REMOTE MECHANISM

Notes:

- All Active connections must be on the same phase.
- Total length of ControlLink cable in an installation must not exceed 50 m.

Example: Typical 3-way dimmer installation using Wiser Iconic Push-Button Dimmer + 2 Smart Remote Mechanisms



Note:

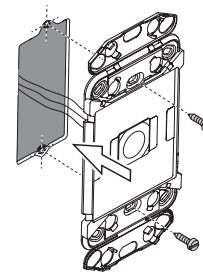
All Active connections must be on the same phase.

A	Active
N	Neutral
L	Load
CTL	ControlLink
PE	Protective Earth

Notes:

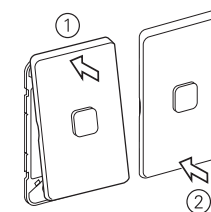
- Up to 5-way dimming is possible with max. 3× Wiser Iconic Push-Button Dimmers + remainder Iconic Remote Mechanisms.
- Multiple dimmers cannot share the same load(s).
- Total length of ControlLink cable in an installation must not exceed 50 m.
- Control and load cables must not be coupled.

Mounting the grid

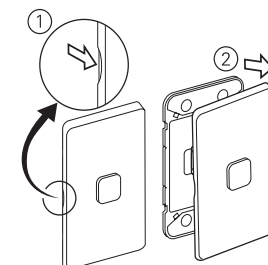


Wall box depth:
min. 35 mm

Installing the skin



Removing the skin





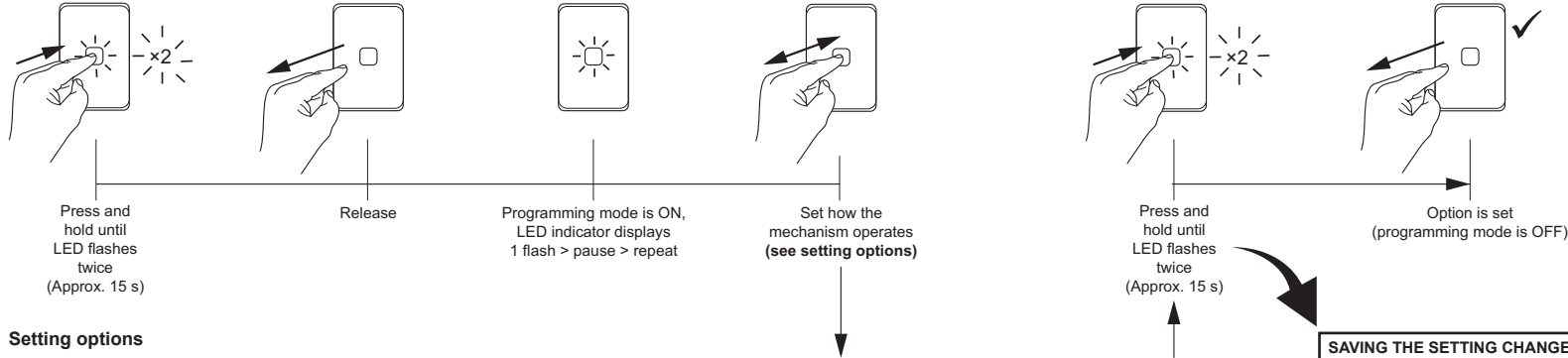
Smart Remote Mechanism and Iconic Push-Button Dimmers—default settings

The Smart Remote Mechanism works 'out of the box' with the Wisier Iconic Push-Button Dimmer and the Iconic Push-Button Universal Dimmer with ControlLink. The mechanism LED indicator automatically follows the LED setting of the Wisier Iconic Push-Button Dimmer.

Configuring the Smart Remote Mechanism for other Iconic primary mechanisms

The Smart Remote Mechanism is compatible with other Iconic push-button primary mechanisms. If the primary mechanism is not a dimmer, you must set the Smart Remote Mechanism to operate as a switch (see below).

Changing how the Smart Remote Mechanism operates



Setting options

- There is no need to change Smart Remote Mechanism settings when using the mechanism with the Wisier Iconic Push-Button Dimmer.
- You can change **either** the mechanism function setting **or** LED indicator behaviour setting while in programming mode. To change both: enter programming mode, make one of the changes, save and exit, then re-enter programming mode, make the other change, save and exit.

Setting the mechanism function

Option	Setting	Use mechanism with:	Action to set option	LED indication
1	Operate as a switch (toggle On/Off)	<ul style="list-style-type: none"> Iconic push-button electronic switches, timers and time clocks Other Iconic push-button devices with ControlLink that require a toggle switch 	No action (Option 1 is selected automatically when programming mode starts)	1 flash > pause > repeat
2	Operate as a bell press (momentary switch)	Iconic push-button devices with ControlLink that require a bell press switch	Short press once	2 flashes > pause > repeat
3	Operate as a dimmer (On/Off, ramp Up/Down) DEFAULT SETTING	Iconic push-button dimmers with ControlLink	Short press twice	3 flashes > pause > repeat

Setting the LED Indicator behaviour

To manually change the LED indicator setting to match the settings of the primary mechanism, choose one of these options.

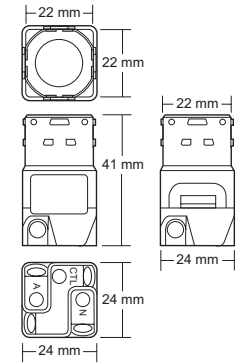
Option	Setting	Use these settings with:	Action to set option	LED indication
4	LED indicator OFF when load is ON; 10% illumination when load is OFF.	Iconic push-button devices with ControlLink that do not support automatic sync of LED indication setting with connected Smart Remote Mech.	Short press three times	4 flashes > pause > repeat
5	LED indicator ON when load is ON; OFF when load is OFF.		Short press four times	5 flashes > pause > repeat
6	LED indicator OFF at all times.		Short press five times	6 flashes > pause > repeat
7	LED indicator ON when load is ON; 10% illumination when load is OFF DEFAULT SETTING		Short press six times	7 flashes > pause > repeat

Technical data

Note: See product data sheet for full specifications.

Operating voltage	220–240 V a.c., 50 Hz
Multi-way dimming limits	Max. 5-way dimming with up to 4 Smart Remote Mechanisms
Multi-way interface	ControlLink
ControlLink cable limit	Max. 50 m for entire installation
Environmental rating	IP20 (designed for indoor use only)
Operating humidity	5%–90% RH, non-condensing
Compliance	AS/NZS 60669.2.1, AS/NZS CISPR-15

Specifications typical at 25 °C.



SAVING THE SETTING CHANGE

The setting change is only saved after this step (pressing and holding the push-button until the LED flashes twice).

TO EXIT WITHOUT MAKING THE SETTING CHANGE

Wait 30 seconds without taking any action and the mechanism will exit programming mode.

Customer care

Warranty information

We warrant this product for 2 years—for details visit:

<https://www.schneider-electric.com/au/en/about-us/legal/terms-and-conditions.jsp>

Our goods also come with guarantees that cannot be excluded under the Australian Consumer Law. You are entitled to a replacement or refund for a major failure and compensation for any other reasonably foreseeable loss or damage. You are also entitled to have the goods repaired or replaced if the goods fail to be of acceptable quality and the failure does not amount to a major failure.



Schneider Electric (Australia) Pty Ltd

33-37 Port Wakefield Road, Gepps Cross SA 5094

Customer Care: 13 73 28

Email: customercare.au@se.com

www.schneider-electric.com.au

Schneider Electric reserves the right to change specifications, modify designs and discontinue items without incurring obligation and whilst every effort is made to ensure that descriptions, specifications and other information in this instruction are correct, no warranty is given in respect thereof and the company shall not be liable for any error therein.

© Schneider Electric 2019

This material is copyright under Australian and international laws. Except as permitted under the relevant law, no part of this work may be reproduced by any process without prior written permission of and acknowledgment to Schneider Electric.