



FEATURES

- High quality 475 Lumen 6500K white SMD LEDs
- 2 x Side SMD LEDs for wide flood lighting
- 250 Lumen SMD LED for long distance spot beam
- Intelligent sensor mode for hands-free operation
- Super tough construction - IK07 shock resistant
- IP65 dust & water resistant
- 60° Rotational head
- Fully adjustable non-slip silicone headband
- Red-to-Green charging indicator
- Faster USB-C rechargeable (1m cable included)
- Quick 2 ½ hour charge time

BATTERY - 3.7v 1500mAh Li-polymer Rechargeable Battery

WEIGHT - 111g

DIMENSIONS - Headlight - H:47.5 x W:78.5 x D:46mm

OPERATION

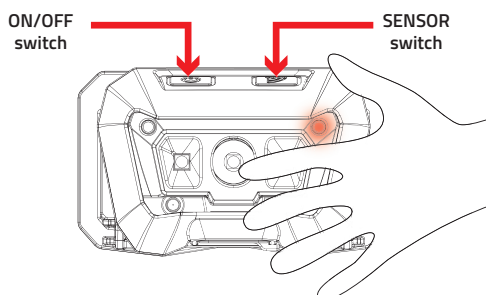
RIGHT SWITCH = MAIN MODES

Switch sequence: SPOT BEAM > FLOOD LIGHT LOW > FLOOD LIGHT MEDIUM > FLOOD LIGHT HIGH > OFF

MEMORY FUNCTION: If left in any mode for over 5 seconds, the next press will turn off. Next time you turn ON, it will start at the Mode that was last used.

LEFT SWITCH = SENSOR MODE

Press the left switch to activate SENSOR mode, a red light will appear to confirm sensor mode is activated. Then wave your hand in front of the head lamp to turn it ON or OFF (sensing distance less than 10cm). Sensor mode available in Floodlight High and Spot Beam modes. The Memory Function will remember which mode was last used and the Sensor will turn on these LEDs in High mode. Press SENSOR switch again to turn SENSOR mode OFF.



ANSI FL 1 Standard

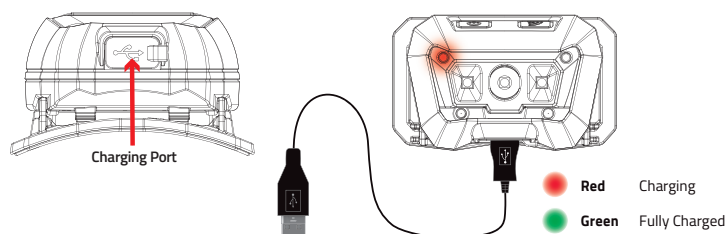


Mode	Lumens	Beam Distance	Runtime
SPOT BEAM	250 Lumens	90 M	6 H
FLOODLIGHT - LOW	30 Lumens	6 M	35 H
FLOODLIGHT - MID	250 Lumens	16 M	8 H
FLOODLIGHT - HIGH	475 Lumens	25 M	4 H

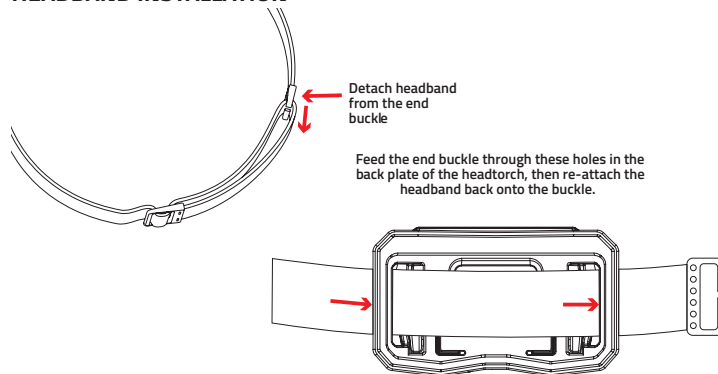
CHARGING

1. Only use a USB-C 5V cable (max 1A).
2. Lift the charging port cover on the bottom of the headlight.
3. Plug the USB-C end of the cable into the charge port.
4. Plug the USB end of the cable into a USB charging port (do not exceed 5V 1A charging input or damage may occur).
5. Red LED indicates charging, green LED shows fully charged.
6. Charge Time: 2 ½ hrs

Warranty void if not used with the specified chargers



HEADBAND INSTALLATION



ADVICE & IMPORTANT INFORMATION!

Do not look directly at the LED. Do not operate in direct sunlight or extreme temperature conditions (below -10°C or above 40°C).

LEDs will become warm/hot when switched on; do not touch and never place LEDs face down on any surface – risk of fire!

Do not use the device if there is any visible damage to the housing, charge port or cable. Take care when using a USB plug adaptor, check for any damage. DO NOT exceed 5V 1A charger output or damage may occur to the battery.

The rechargeable battery will reach full performance after a few complete charging and discharging cycles. To keep the rechargeable battery in optimum condition, it should be recharged every 3-6 months, especially if it is not being used for a long period of time. Always fully charge batteries before storage.

Always protect batteries from heat, intense sunlight, fire, water and moisture – danger of explosion! If a battery is damaged, fluids can leak out. AVOID contact as this can lead to skin irritation and/or burns. If skin contact occurs, rinse thoroughly with water. If irritation persists, seek medical advice. Seek immediate medical assistance if lithium battery fluid comes into contact with the eyes.

Children under 12 years of age should only use the product under adult supervision. Do not open, disassemble or attempt to modify the product; this will void the warranty and can be dangerous. Improper use or modification is not covered under the warranty.

Take care not to let the lenses come into contact with hard/sharp objects, damage/scratches to the lenses will affect light output.

This product is water resistant to IPX5 – DO NOT SUBMERGE. If the product has been subjected to excessive moisture/water the warranty may be void.

This product has a 1 year standard warranty (or extended to 2 years once registered online at WWW.UNILITE.CO.UK) against manufacturing faults and defects. It does not cover normal wear and tear, modifications, accidental damage or poor maintenance. Unilite warranties do not cover battery leaks or the use of incorrect chargers and cables that can damage batteries.

Do not dispose of this device in normal household waste. It must be disposed of via an authorised electrical appliance disposal centre or at your local waste disposal unit.

Please re-use or recycle packaging where possible. Keep these instructions for future reference or for subsequent possessors.

